

# Super Yacht

i n d u s t r y

## **Tamsen Yachts**

BLENDING PASSION WITH SUCCESS

## **Icon**

A STAR IS BORN

## **Germany**

DISTINCTIVE YACHT BUILDERS

## **boot Düsseldorf**

FULL STEAM AHEAD

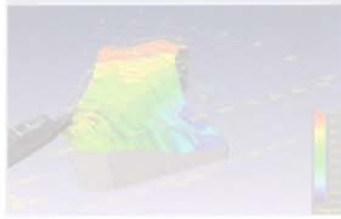


# Outfitters Page

## 3D Forward Sonar

This latest development of the well proven patented Echopilot Forward Looking Sonar displays a 3D representation of the underwater scene ahead of the boat. The seabed terrain and potential hazards are shown, for the first time, with unparalleled realism. This is a real time sonar image of what is actually ahead of the boat, not a chart rendered into 3D. Twin retractable transducers ensure complete forward coverage whatever the hull form. The view ahead is 60° in the horizontal plane and over 90° in the vertical plane and the forward range is up to 200 metres. The screen updates every 1 to 2 seconds depending on the range setting. Available as a black box the 3D FLS outputs include S and Composite video, VGA and HDMI for a full colour picture on a wide range of compatible displays.

**i.** [www.echopilot.com](http://www.echopilot.com)



## Efficient Sail Drive

ZF Marine, with headquarters at ZF Padova SpA, Italy, has now added Sail Drives, called ZF SD, to their own product range. The well-known propulsion system for sailboats, is now available for all engine manufacturers. It offers the well-recognized advantages of excellent hydrodynamic efficiency and ease of installation. The system allows positioning on the engine to be installed facing forward or abaft with respect to the transmission, which in turn permit more freedom in the layout of the installation and reduces considerably vibrations and noise onboard, compared to a traditional shaft line system. The most important feature is the ease and the safety during installation in any position, as no particular settings or alignments are necessary. The system is robust and reliable, and can be matched with a large range of fixed or foldable propellers, able to propel the vessel powerfully both in forward and reverse gear.

**i.** [www.zf.com](http://www.zf.com)



## RoomLite

The light-imbued bathroom walls on the yacht 'Chrisco' already made enthusiastic waves at the presentation in Monaco. Behind the concept is Yachtlite with its novelty LED-based product 'RoomLite'. Custom-made, solid and, of course, completely waterproof elements. These elements either illuminate frontal directly from the acrylic or they even saturate natural stone surfaces from behind with homogeneous light.

The marginal depth of only 33 mm renders these filaments extremely versatile. The advantage of this solid Yachtlite construction technique is that no cavities exist between the surface and the light source, meaning that condensation cannot occur. Ideas for the multifaceted application possibilities emerge once the natural stone surface is saturated with light: intarsia, logos, stairs, elevator flooring, bar elements or wall surfaces. A wide variety of illuminating projects are in planning or already in delivery.

**i.** [www.yachtlite.com](http://www.yachtlite.com)



## Green AC Units

Dometic Marine is introducing a new line of all-green split-system air conditioning units, designed specifically to run on friendly R410A refrigerant, which meets EPA and international requirements for ozone-depleting substances under the Montreal protocols.

The Emerald Series represents a breakthrough result in an 'optimized marine design', in terms of size, weight, capacity, power requirements, ease of installation and other important metrics. Emerald provides more options for combining multiple condensers and evaporators in a staged multi-zone system. They provide both heating and cooling. Each condensing unit has its own control that manages the temperature independent of other units.

**i.** [www.dometic.com](http://www.dometic.com)



## Safeguarding The Stern

Besenzoni has applied all its experience gained in watertight applications to Corner, equipping the system in a way to protect it against the effects of being continuously submerged. Corner is hidden inside the hull in a box made of

aluminium and composite material which has been studied to create a structural continuity with the yacht: the software-controlled hydraulic movements allow to activate the facilitator by a simple action using the remote control, sitting behind the steering wheel or from any other position on the boat. This facilitator system has been developed to facilitate moorings which can be installed at the most extreme part of the broadside or at the swim platform. The brand new device is characterized by a stainless steel carrying structure and rollers made of shock absorbing polymeric material suited to mitigate the impact with the quay or other obstacles.

**i.** [www.besenzoni.it](http://www.besenzoni.it)





# Yachtlite<sup>®</sup> Exclusive Light Design



Visit us at:  
boot Düsseldorf,  
Hall 7a, Stand  
Deutsche Yachten

23.-31.1.2010

**boot**  
Düsseldorf

MEMBER OF



DEUTSCHE YACHTEN  
EXPERTISE GERMANY

Stefan Wienecke GmbH  
Westpreussenufer 2  
30659 Hannover · Germany

Tel.: +49 511 647 40 0  
Fax: +49 511 647 40 40  
[www.yachtlite.com](http://www.yachtlite.com)

**RoomLite**

*luminous onyx surface*



**YachtLites**



Light up your world: Exclusive design illumination for the exterior and interior of your yacht